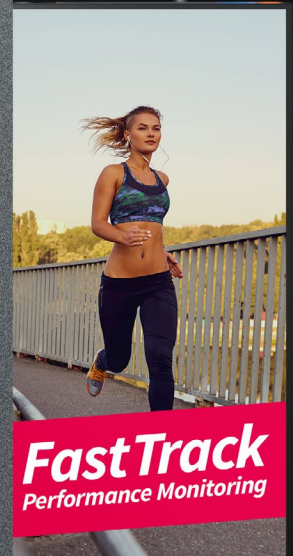
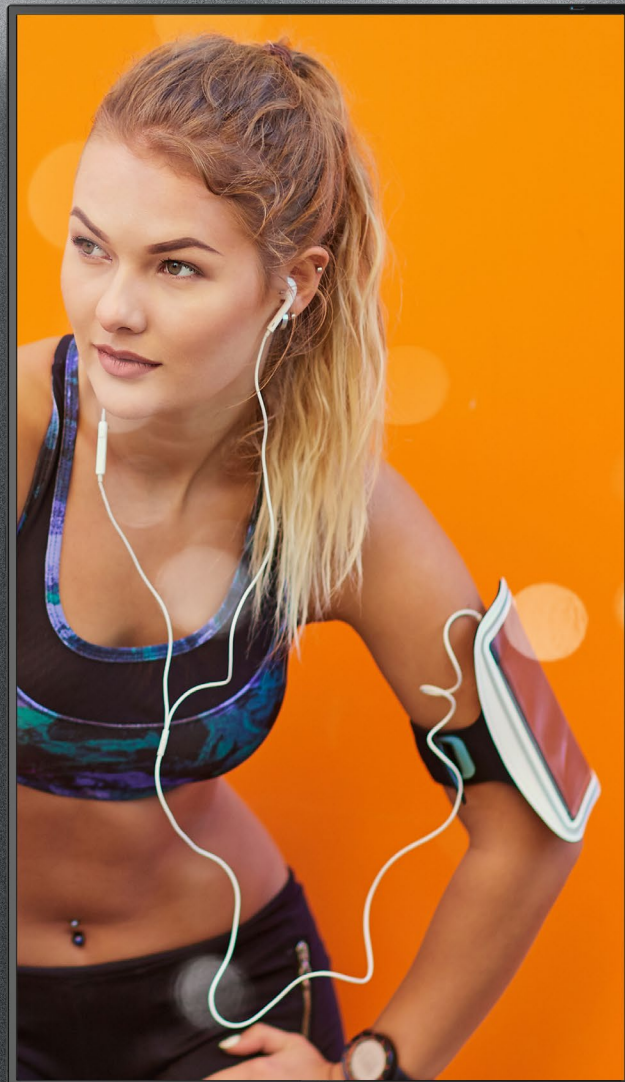


NEC MultiSync® ME Series Large Format Displays

187
CERTIFIED
OPERATION

43", 50", 55" and 65" Commercial Displays, Ideal for Digital Signage Applications



Cost-conscious commercial design with full metal chassis allows for seamless integration into any digital signage environment while maintaining the commercial ruggedness necessary for retail, leisure and corporate signage

Share your message, your way!

Focused Design, Meaningful Message

Create pixel-perfect imagery at a cost-conscious price point with the new fully commercial NEC ME Series large format displays. By focusing on customer needs and maintaining expected NEC quality, the ME Series gives customers a reliable mainstream digital signage display that can support both landscape and portrait orientations while also allowing customers the modularity possibilities to customize their needs dependent on their application and use. The new series contain a full metal mechanical chassis, allowing for a more robust design necessary for commercial applications while maintaining the attractive aesthetics that allow the focus of onlookers to be on what matters, the message. Simple and targeted connectivity options allow customers to have the up-to-date options that they need while not having to overpay for excess and unused interfaces. The NEC ME Series boasts 400 cd/m² brightness which is ideal for a majority of digital signage applications in SME, leisure, retail and grocery store environments when the focus should be on the message, not the budget.

High-End UHD Picture Quality

By supporting native 3840 x 2160 resolution with HDR compatibility across the entire ME Series lineup, imagery and messaging can become more vivid and lifelike than ever before!

Even Bezel Design

Completely even bezel design along all 4 sides of the display allow for a true, commercial grade look when mounted in either landscape or portrait orientations.



Cisco Compatible Partner

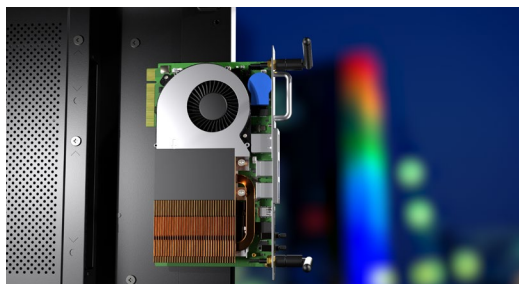
Full compatibility with Cisco WebEx Kit products. The Cisco WebEx Kit is a professional video conferencing tool that has everything integrated into a single soundbar including microphone(s), camera(s), the speaker and the Video Conferencing Codec. This, combined with the large format NEC displays provide the ultimate conferencing solution.



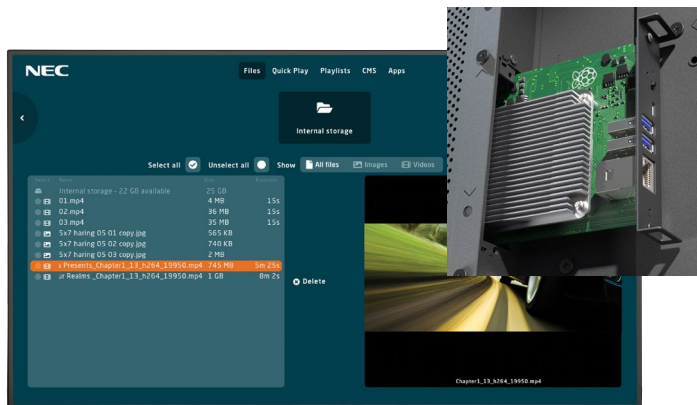
Essential Viewing with Advanced Features

Professional Modularity

The ME series gives customers everything they need for their digital signage application while also offering the ability to enhance their screen through multiple integrated professional technologies. The ME Series accepts Intel® Smart Display Modules Large or Small through clever mechanical and electrical design allowing for sleek all-in-one intelligence and interoperability in a small form factor setting. This allows for the flexible implementation of Intel® processor-based products directly into the NEC ME Series products without having to deal with the hassles of mounting external devices and running video or audio cabling. Audio, video, control and power signals are all internal from the Intel® SDM through to the display, simplifying installations and allowing for clean and easy set-up.



The ME Series also expands on the success of earlier display line-ups by allowing for the optional implementation of a Raspberry Pi Compute Module 4 directly into each display. The Raspberry Pi Compute Module 4 greatly outperforms previous versions by offering gigabyte network speeds, faster CPU processing and true 4K support. The new version also comes imaged with the new and user-friendly NEC MediaPlayer. Through an intuitive user-interface, the NEC MediaPlayer allows you to load, schedule and edit playlists, access internal storage, access online media through an internal browser or even image the RPi to qualified CMS partner platforms - all through the supplied NEC remote control or remotely through a web-interface!



NaViSet Administrator 2

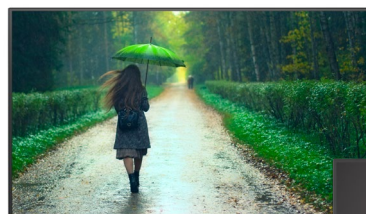
This software is an all-in-one remote support solution that runs from a central location and provides monitoring, asset management and control functionality of NEC display devices and Windows computers. It is ideal for multi-device installations over arrays as it allows for task management, reporting and on-demand control options. Control your entire NEC ecosystem through this free optional asset management software!



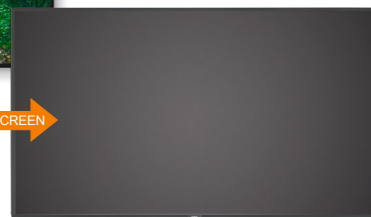
Input Detect Functionality

This feature allows for the customer to prioritize up to 3 inputs so that if a primary source goes down, the display will automatically switch to whatever the customer has prioritized next. The first detect option also allows for the display to automatically turn onto any source that plugs into it, allowing the display to wake on any synced signal.

Typical Display

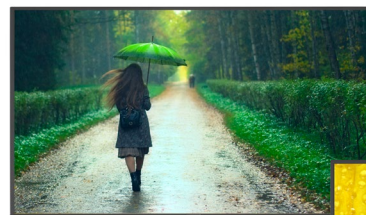


If the source fails, this results in a blank screen

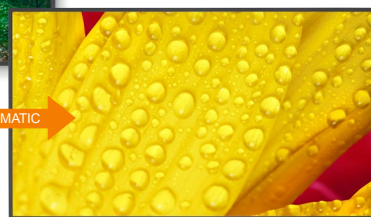


BLANK SCREEN

ME Series

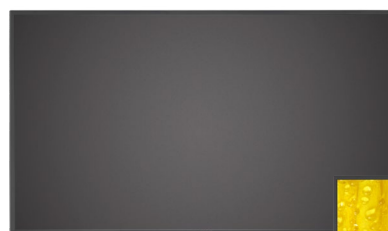


If the source fails, the display auto-switches to the next prioritized source, meaning zero down time on the display



AUTOMATIC

First Detect



Setting the display to First Detect would allow for the display to automatically turn on when any source is plugged into it.



SOURCE



AUTOMATIC

ME431

43" | UHD | 400 cd/m²
RPI Slot | SDM | MediaPlayer
Haze Reduction

ME501

50" | UHD | 400 cd/m²
RPI Slot | SDM | MediaPlayer
Haze Reduction

ME551

55" | UHD | 400 cd/m²
RPI Slot | SDM | MediaPlayer
Haze Reduction

ME651

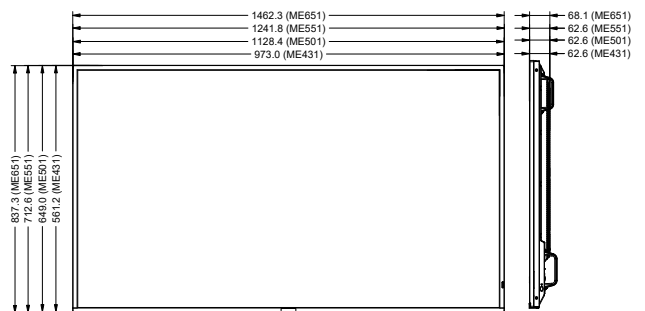
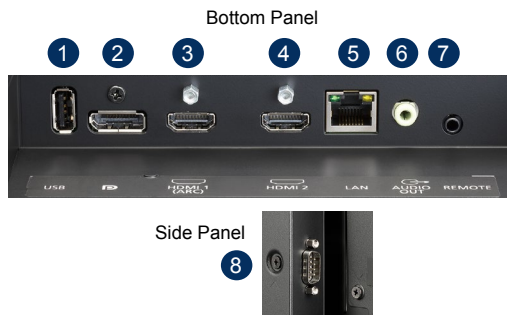
65" | UHD | 400 cd/m²
RPI Slot | SDM | MediaPlayer
Haze Reduction

SPECIFICATIONS		ME431	ME501	ME551	ME651
LCD MODULE	Panel Technology	IPS	VA	IPS	
	Viewable Image Size	43"	50"	55"	65"
	Native Resolution	3840 x 2160			
	Brightness (Typical/Minimum)	400 cd/m ²			
	Contrast Ratio ¹	≥8000:1			
	Viewing Angle	178° Vert., 178° Hor. (89U/89D/89L/89R) @ CR>10			
	Aspect Ratio	16:9			
	Color Gamut	72% NTSC			
	Displayable Colors	Over 1.07 Billion (8 bit + FRC)			
	Orientation	Landscape and Portrait (CCW Rotation)			
	Panel Haze (%)	1	2	1	
CONNECTIVITY	Input Terminals	Digital	HDMI 2.0 x2, DP 1.2 x1		
		External Control	LAN (100Mbit), 3.5mm Mini Jack IR Remote, RS-232C		
		Data	USB 2.0 (5V/2A, Media Player)		
	Output Terminals	Audio	3.5mm Mini Jack		
POWER CONSUMPTION	On (Typ/Max Brightness/All Max)	80W/95W/175W	85W/100W/210W	120W/155W/265W	165W/215W/320W
	Network Standby	2W			
	Normal Standby	<0.5W			
	Current Rating	1.8A - 0.9A @ 100V - 240V	2.4 - 1.0A @ 100V - 240V	2.9 - 1.2A @ 100V - 240V	3.6 - 1.5A @ 100V - 240V
	Speaker Rating	Integrated 10W x 10W, Optional through SP-RM3a			
PHYSICAL SPECIFICATIONS	Bezel Width (L/R, T/B)	13.9mm/13.9mm/13.9mm/13.9mm	14.9mm/14.9mm/14.9mm/14.9mm	13.9mm/13.9mm/13.9mm/13.9mm	14.9mm/14.9mm/14.9mm/14.9mm
	Net Dimensions (Without stand; W x H x D)	973.0 x 561.2 x 62.6mm	1128.4 x 649.0 x 62.6mm	1241.8 x 712.6 x 62.6mm	1462.3 x 837.3 x 68.1mm
	Net Weight (Without Stand)	13.9kg	17.3kg	19.8kg	29.4kg
	VESA Hole Configuration	4x M6 x 12mm (200 x 200)	4x M6 x 12mm (400 x 400)		4x M8 x 16mm (400 x 400)
SENSORS	Ambient Light Sensor	Optional (KT-RC3)			
	Human Sensor	Optional (KT-RC3)			
	Temperature Sensor	Integrated and Programmable			
ENVIRONMENTAL CONDITIONS	Operating Temperature	0 to 40C			
	Operating Humidity	20-80%			
	Operating Altitude	3000m			
ADDITIONAL FEATURES	Pixel Failure Class ISO 9241-307, Class 1 Audio Integrated Speakers (10 W + 10 W) Shipping Content Display; HDMI Cable; Power Cable; Remote Control; User Manual Operating Hours 18/7 External Control AMX NetLinx Support; ASCII Control Commands; HDMI CEC; HTTP Browser; PJLink; Scheduled Timer; SNMP Remote Management Automated Email Alerts; NEC NaViSet Administrator 2 Security Disable HW Buttons; Disable IR Functionality; Emergency Notification				
SHIPS WITH	3m AC Power Cord, 2.0m HDMI Cable, IR Remote Control, 2 x Batteries				
Optional Speakers	SP-RM3a (Upcoming)				
Optional Stand	ST-43M	ST-43M or ST-401	ST-43M or ST-401	ST-65M	
Other Accessories	Intel Smart Display Module computing devices, Raspberry Pi Compute Module 4 with NEC MediaPlayer pre-installed, Human Sensor (KT-RC3)				

¹ Out of the box conditions, local dimming ON

Input Panels

1. USB (Media Player / Power)
2. DisplayPort IN
3. HDMI1 IN
4. HDMI2 IN
5. LAN (Control)
6. Audio OUT
7. IR Remote IN
8. RS232C IN



Tabletop Stands

- ST-43M (ME431/ME501/ME551)
- ST-401 (ME501/ME551)
- ST-65M (ME651)



Wall Mounts

- PDW S 32-55 L and P
- PD02W T L L, PD03W T M P



Sharp NEC Display Solutions Europe GmbH, Landshuter Allee 12-14, D-80637 Munich
 infomail@nec-displays.com, Phone: +49 (0) 89 99 699-0, Fax: +49 (0) 89 99 699-500
 www.sharpnecdisplays.eu